



GRANGE LONDON



63 Wolfe House Kensington High Street, Kensington, London, W14 8QA

Excellent Value! Stylish 2 Bedroom apartment by Kensington High street boasting lots of natural light and secure underground parking.

New to the market this 2 bedroom, 2 bathroom luxury apartment is on the 10th floor of Wolfe House with views towards both Kensington High Street and the Courtyard. The development has a 24 hour concierge and extensive residents' amenities from cinema room, to gym, spa and pool. Its location gives you easy access to renowned restaurants, high end retail and Hyde Park.

The property has recently been refurbished and in our opinion is perfect as a home, investment or 'lock up and leave' pied a terre.

- 24-hour Concierge
- Cinema Room
- Gym & Spa
- Swimming Pool
- Easy Access to Restaurants

£1,500,000

Kensington High Street, W14

Approximate Gross Internal Area = 784 sq ft / 72.8 sq m

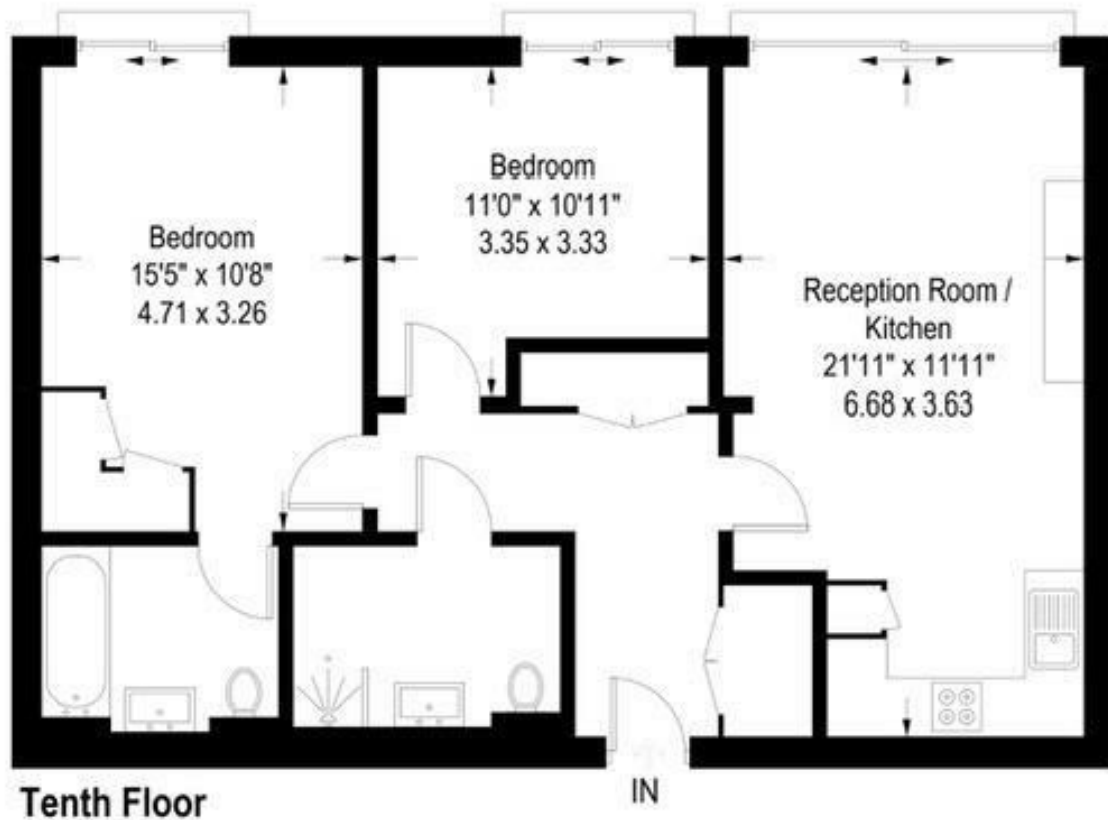


Illustration for identification purposes only,
measurements are approximate, not to scale. (ID905818)

Energy Efficiency Rating		
	Current	Potential
Very energy efficient - lower running costs		
(92 plus) A		
(81-91) B		
(69-80) C		
(55-68) D		
(39-54) E		
(21-38) F		
(1-20) G		
Not energy efficient - higher running costs		
England & Wales	EU Directive 2002/91/EC 